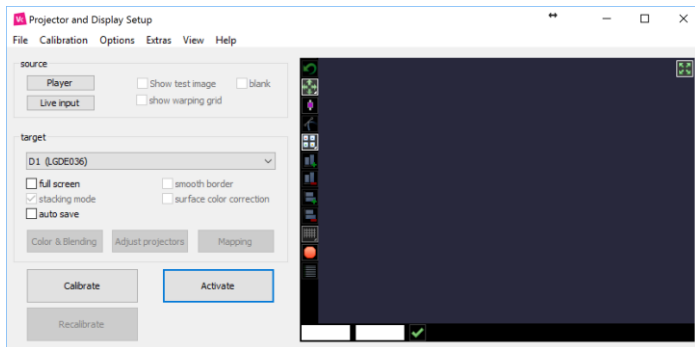
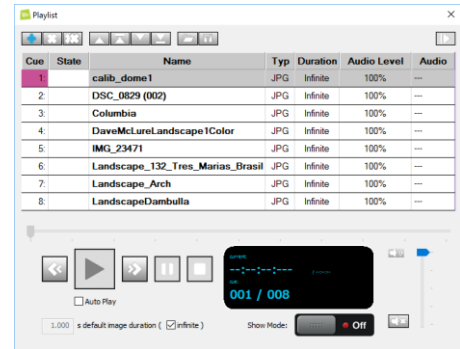


# VIOSO Calibrator & VIOSO Player command line parameters

Last edited: 2022-10-14



VIOSO Calibrator



VIOSO Player

## Software location:

- After installation of VIOSO6
  - o Via Windows Start Menu: All Programs / VIOSO6/ VIOSO6
  - o Exe file location: C:\[Path of installation]\VIOSO6\SPCalibrator[64].exe
- After installation of VIOSO Player:
  - o Via Windows Start Menu: All Programs / VIOSOPlayer / VIOSO Player
  - o Exe file location: C:\[Path of installation]\VIOSO Player\VIOSOPlayer[64].exe

## Parameter:

- /a : start a recalibration behaviour on application startup
- /A : start a recalibration behaviour on application startup and close application when calibration is done
- /E : export using using automation script after load and recalibration, if specified
- /F:"Profile" : preferred GUI Profile (if available)  
accepted profiles: „Player“, „Standard“
- /I:"ip" : ip => network adapter (ip address) to use
- /H : starts the application in scripting host mode, able to perform complex automatic behaviour, defined via script files
- /H:"file" : name => scripting file; like /H with the extension that script file "file" should processed on startup
- /L:"file" : file => name of a sps-file, load on startup
- /Lang:n : n => language code, defines the default language of the application (1033: English US; 1031 German Germany)
- /M : start application GUI minimized
- /O:"path" : path => name of the project path to use at startup
- /R : start playout automatically on application startup
- /S:"path" : path => name of the data exchange directory to use

- /V : verbose mode (detailed informations on error)
- /X:"name" : name => name of the memory file in case of IPC using

## **Example:**

SPCalibrator /L:"final.sps" /S:"c:\VIOSEO\Calib" /I:"192.168.0.1" /M

starts application with conditions:

- load final.sps
- use C:\VIOSEO\Calib as standard data exchange path
- initialize network interfaces of application onto adapter 192.168.0.1
- start application minimized

(file final.sps will be searched inside c:\VIOSEO\Calib directory if not found)